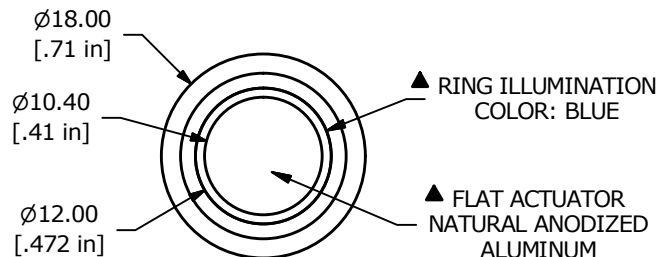


PANEL CUTOUT  
MAX. PANEL THICKNESS  
14.0mm [.55]

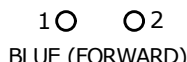


▲ RING ILLUMINATION  
COLOR: BLUE

▲ FLAT ACTUATOR  
NATURAL ANODIZED  
ALUMINUM



SWITCH FUNCTION	
POS. 1	POS. 2
ON	(ON)
1-3	1-2
(ON) = MOMENTARY	



BLUE (FORWARD)

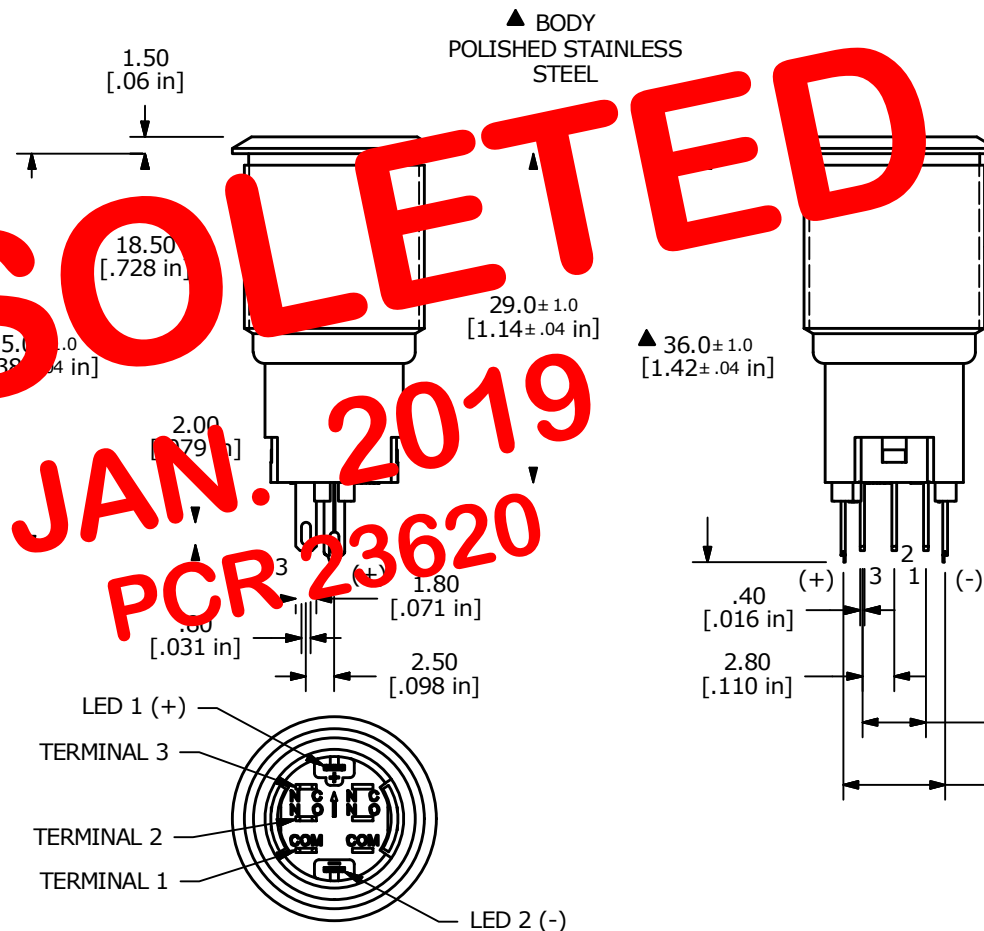


BLUE (REVERSE)



(ON)

CONTACT ON



▲ BODY  
POLISHED STAINLESS  
STEEL

M16x1.0

▲ 36.0±1.0  
[1.42±.04 in]

- NOTE:
- ALL DIMENSIONS IN MM [INCH]
  - GENERAL TOLERANCE: X.X = ±0.4  
X.XX = ±0.25
  - TERMINAL NUMBERS FOR REF ONLY
  - CONTACT MATERIAL: SILVER
  - RATING: 2A 48VDC
  - ELECTRIC LIFE: 50,000 MAKE-AND-BREAK CYCLES AT FULL LOAD.
  - INSULATION RESISTANCE: 1,000 MΩ MIN.
  - DIELECTRIC STRENGTH: 2,000 VAC MIN. FOR 1 MINUTE
  - CONTACT RESISTANCE: 50mΩ MAX. @ 1A 12VDC
  - OPERATING TEMP.: -20°C to 55°C
  - ▲ DENOTES CRITICAL PARAMETER.
  - HARDWARE SUPPLIED: O-RING AND HEXNUT
  - INGRESS RATING: IP65
  - 2011/65/EU (ROHS) COMPLIANT
  - LAMP VOLTAGE: 125V

OBSOLETE

JAN. 2019

PCR 23620

REV	PCR NO	DESCRIPTION	DATE	BY
C	23360	UPDATED RATING TO 2A 48VDC	5/14/18	MJR
B	22883	UPDATED RATING TO 1A 24VDC	6/7/17	MJR

E-SWITCH®				
TITLE PV3WF2B0S0-346				
SCALE 3:2	DATE 2/23/2011	DR CAB	DWG 52-PV3WF2B0S0346	REV C

THE INFORMATION CONTAINED IN THIS DOCUMENT IS PROPRIETARY TO E-SWITCH AND IS NOT TO BE COPIED OR TRANSFERRED